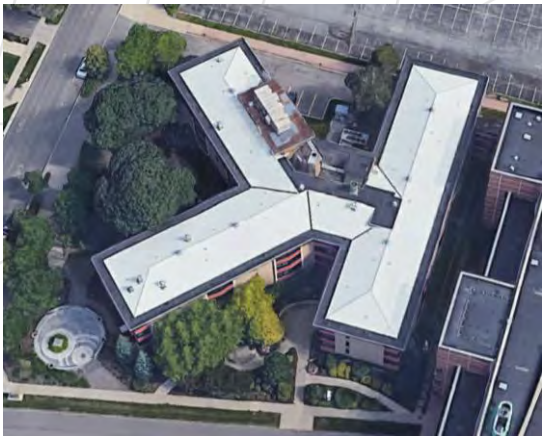
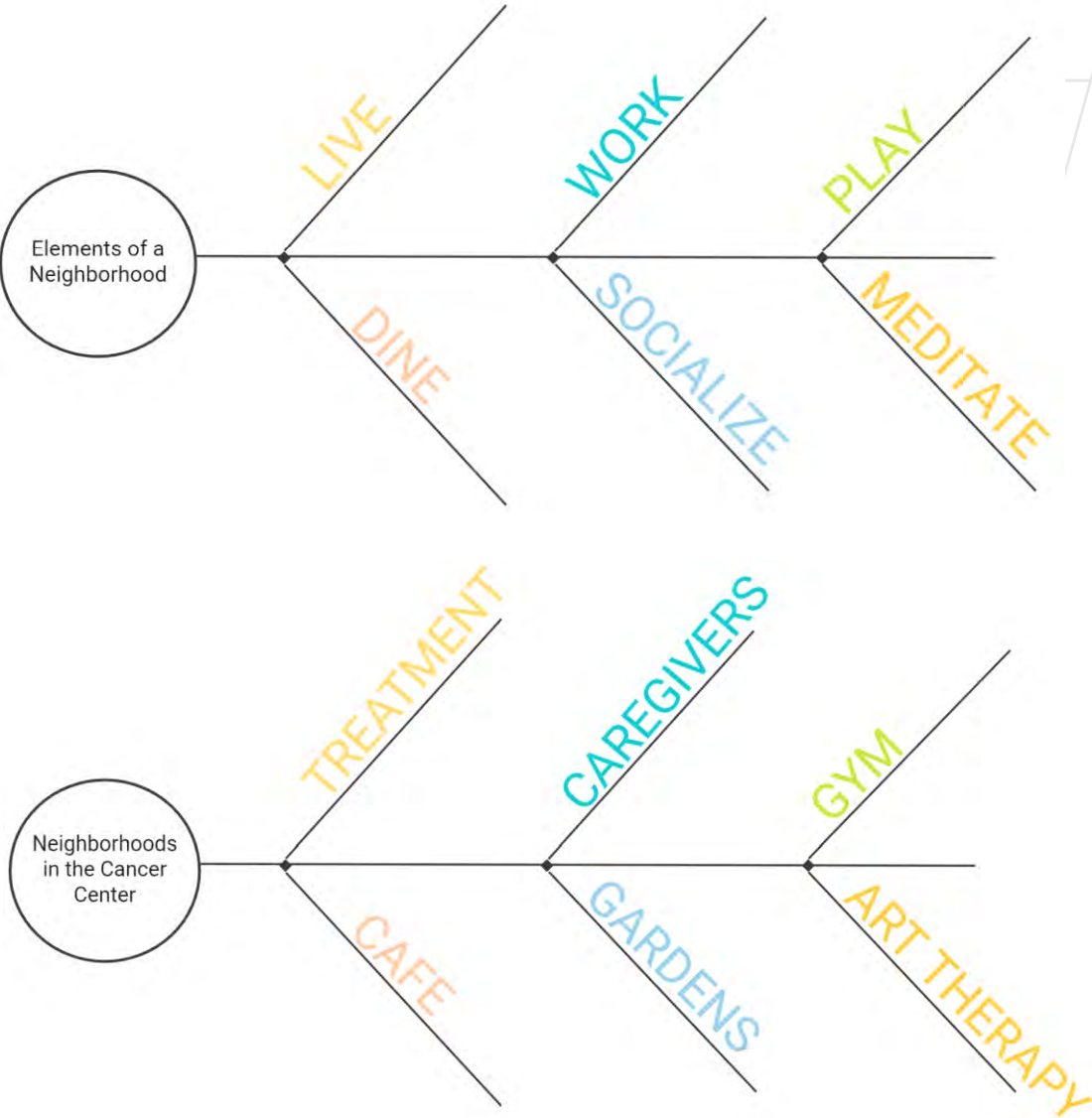


Children's Chemotherapy and Survivorship Center

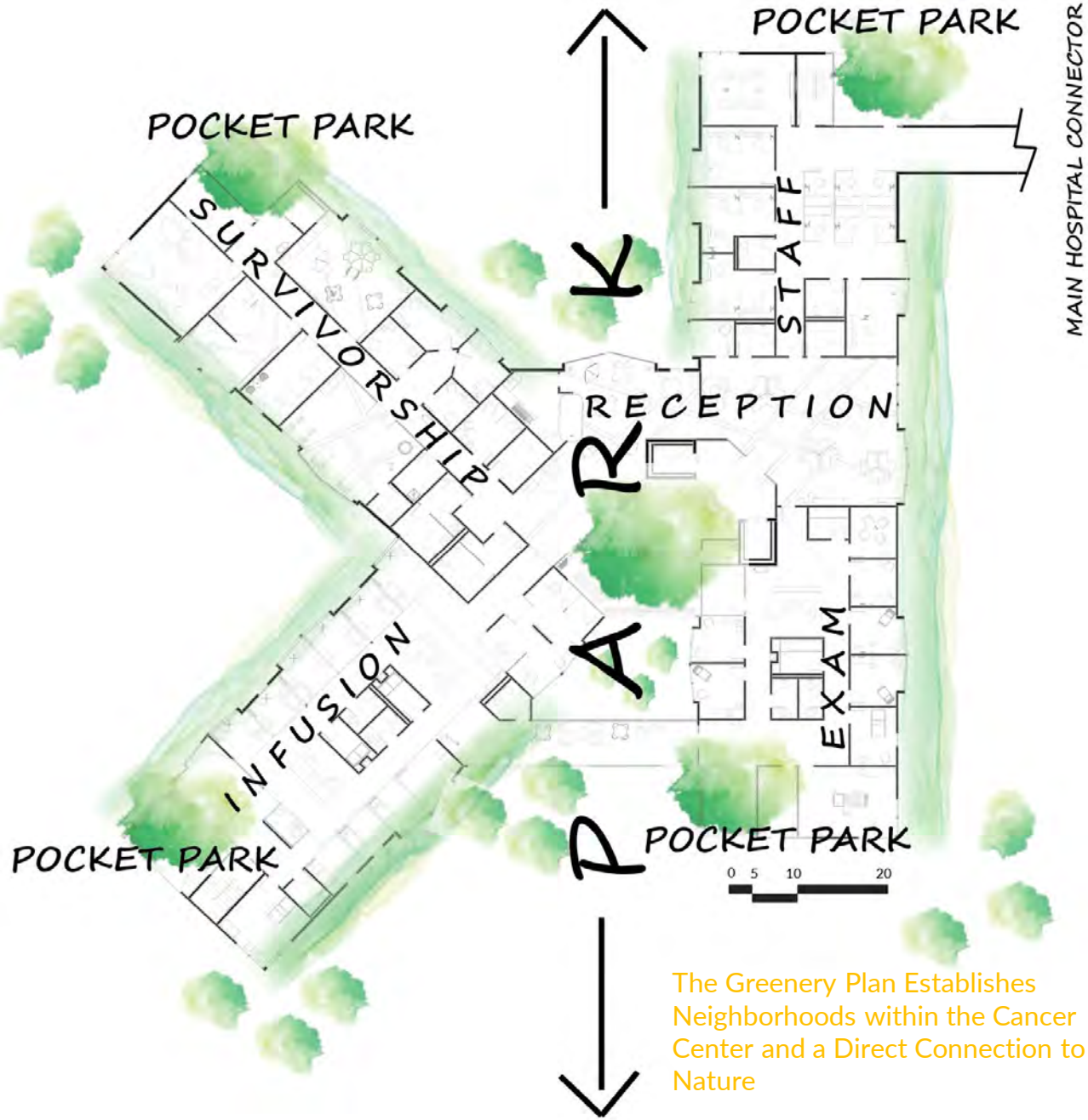
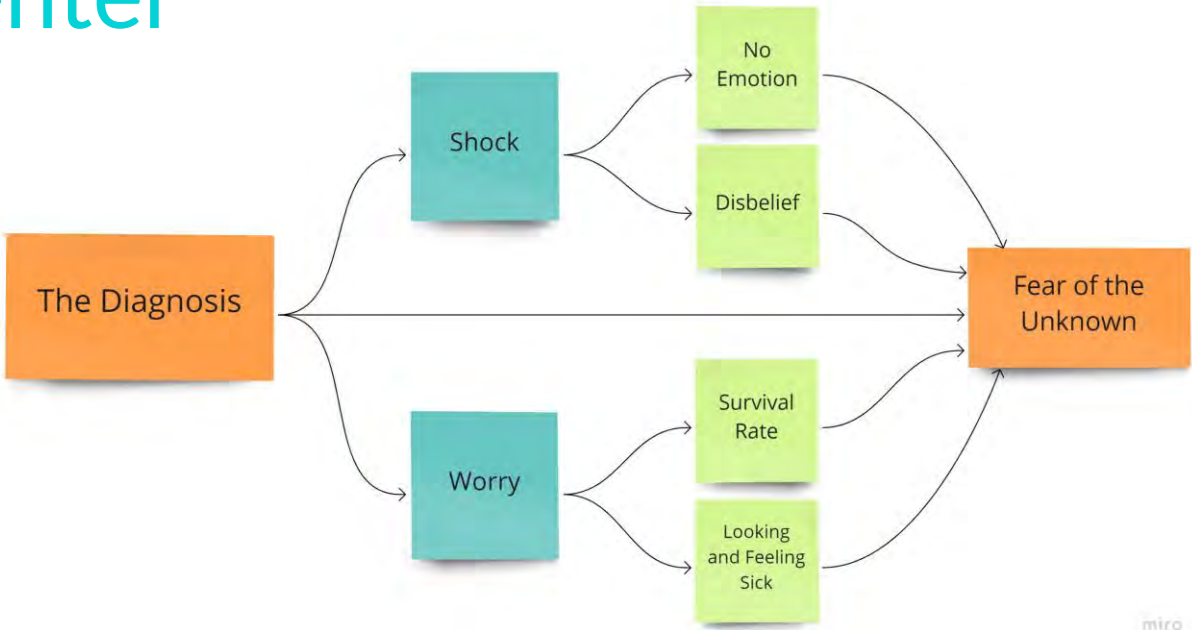
Utilizing a local neighborhood as the inspiration, the center focuses on the attributes of a neighborhood such as: work, play, live, and dine. Neighborhoods create a sense of belonging and identity for the individuals who live there. When thinking about healthcare facilities, it is likely that patients do not feel that sense of belonging and comfort. Therefore, drawing upon these ideas, the cancer center was created through emphasizing the elements of a neighborhood and a direct connection to greenspaces. The Children's Chemotherapy and Survivorship Center was designed to encourage the health and well-being of everyone who occupies the space. Focusing on WELL building standards, there was extreme importance placed on both mind and body treatment methods through medical treatment and alternative treatment regimens such as art therapy, nutrition, and fitness. Altering the connotation of healthcare design and bringing attention to the emotional reaction to healthcare was at the forefront of the design process.



Existing Site at 60 Carlton Street
Buffalo, NY



Connection to Existing Neighborhood





THE WELL BUILDING STANDARDS



THERMAL COMFORT



SOUND



MATERIALS



MIND



COMMUNITY



AIR



WATER



NOURISHMENT



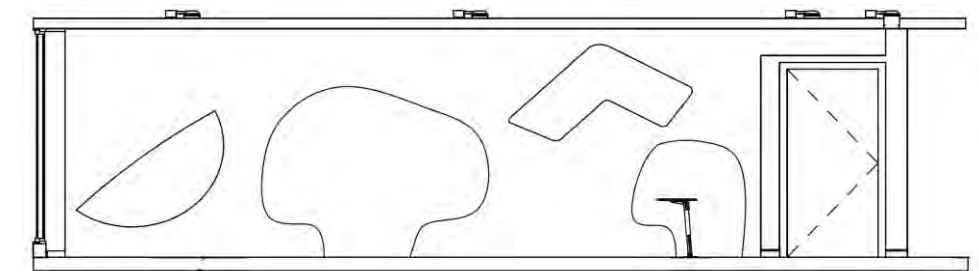
LIGHT



MOVEMENT



Reception and Waiting Room Welcomes Patients in a Space Designed to Alleviate the Fear of the Unknown



The carved-out seating allows children to feel safe and secure in a more confined space.



Café Inspired by Food Trucks with an Artificial Skylight that Replicates Positive Attributes of Sunlight



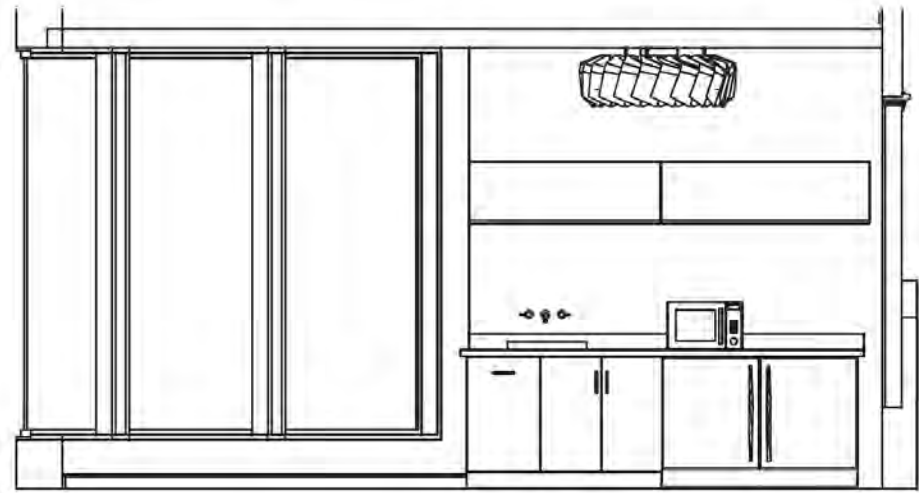
The Infusion Wing Features Semi-Private Bays where Patients Determine their Experience with a Gaming Pod, Optional Privacy Curtains, and Private Rooms



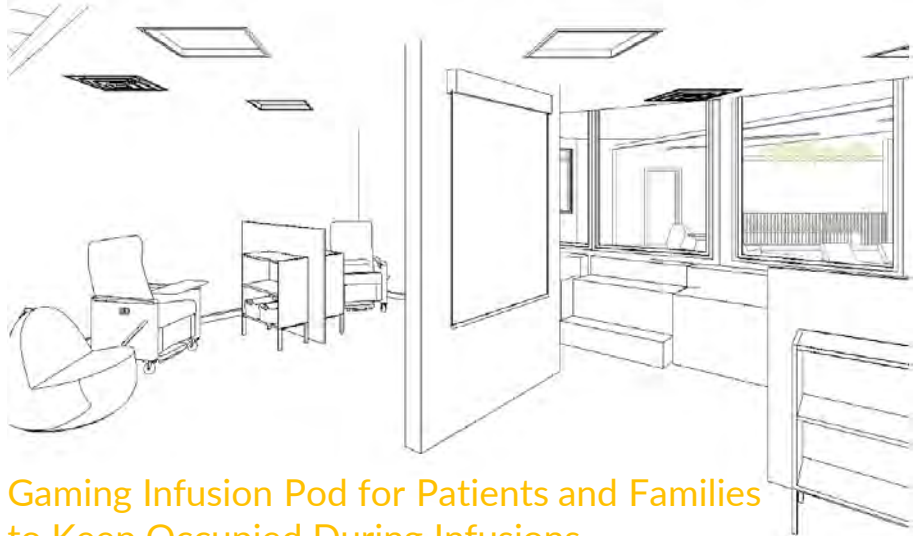
The Deconstructed Corners of the Building Create Outdoor Terraces Some patients who are immunocompromised are not able to be outdoors or surrounded by plants due to direct sunlight and contaminants in the soil. The indoor anteroom is a space for these patients to enjoy the outdoors without being put in harms way.



Nurses Station Sight Lines



The Nutrition Stations Provide Patients and Families with Necessary Nutrients while Receiving Treatment for up-to 8 Hours at a Time



Gaming Infusion Pod for Patients and Families to Keep Occupied During Infusions



Proven to Alleviate Feelings of Stress and Anxiety, the Art Therapy Room is a Space for Children to be Creative



95% of Patients Report Reduced Levels of Distress when Exposed to Nature. The Indoor Garden is a Peaceful and Rejuvenating Space.



The Recreation Room Encourages Movement and Low-Resistance Fitness





HIGH STREET

N OAK STREET

MICHIGAN STREET

CARLTON STREET

ELLCOTT STREET

ELM STREET

FRUIT BELT
NEIGHBORHOOD







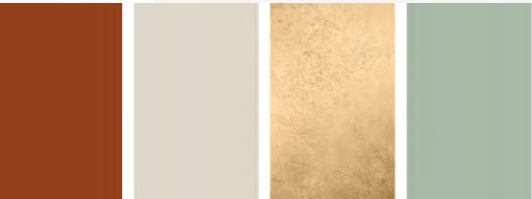




The Armani Hotel Dubai

Concept Statement: The blending of traditional customs with contemporary views inspired the redesign of the Armani Hotel. Guiding this idea is the long-established use of henna that originated in 800 CE in the Middle East as an expressive means particularly to celebrate a bride before her wedding day. Most recently, there has been a growing movement in Dubai to create contemporary and minimal designs with henna. This idea was implemented into the Armani Hotel by acknowledging the past and bringing a new life to the existing space.

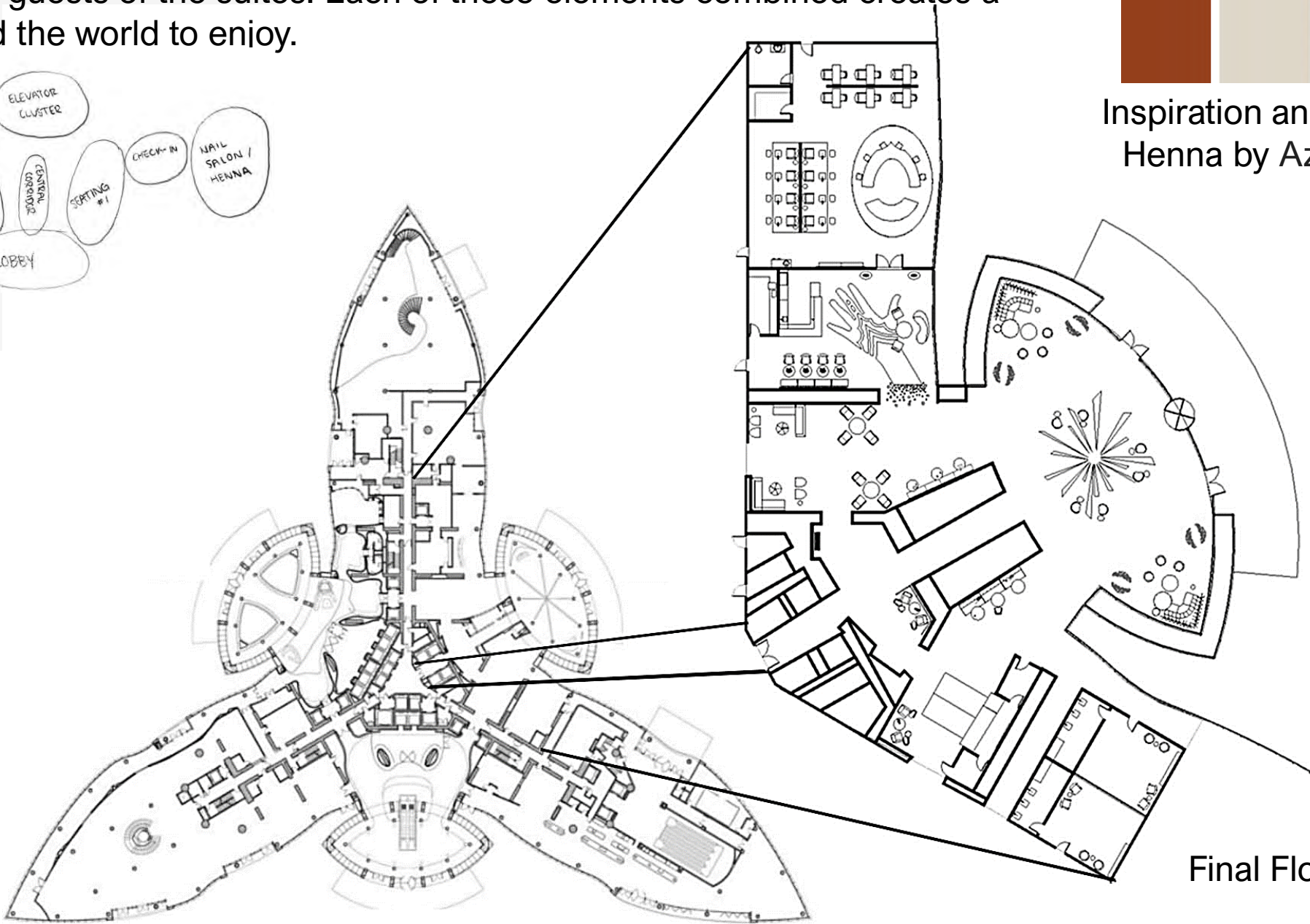
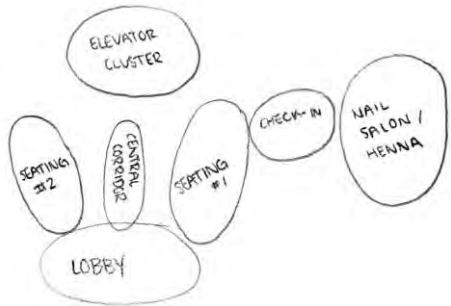
Design Statement: Traditional Arabic interiors often feature geometric patterns, pointed and rounded archways, and tilework. The redesign of the Armani Hotel located within the Burj Khalifa will feature custom tilework throughout the space with an eye towards minimal patterns. The color palette is inspired by the typical stains of henna, specifically hues of tan and terracotta with green and gold accents. Features in the hotel include; a large glass sculpture upon entry, a nail and henna salon, a prayer room, and amenities for guests of the suites. Each of these elements combined creates a luxurious yet tranquil space for guests from around the world to enjoy.



Inspiration and Color Palette
Henna by Azra Khamissa



Existing Site at the Burj Khalifa



Final Floorplan



Hotel Lobby

Existing Floorplan



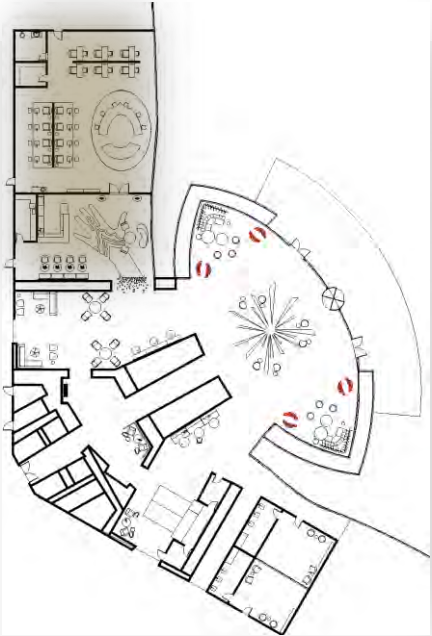
Given the large Muslim community in Dubai, the prayer room is a dedicated space for individuals to actively practice their faith.



Shaw Contract Face-to-Face Carpet



David Trubridge Pendant



Café Outside of Nail Salon



Lounge Seating in Café



Nail and Henna Salon



Henna Branding Display in the Nail Salon



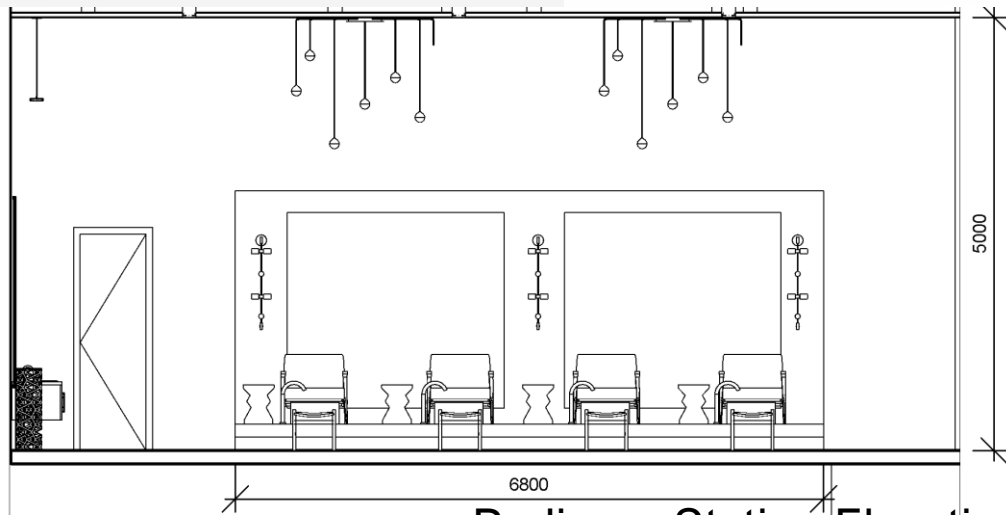
Moroso Klara Chair



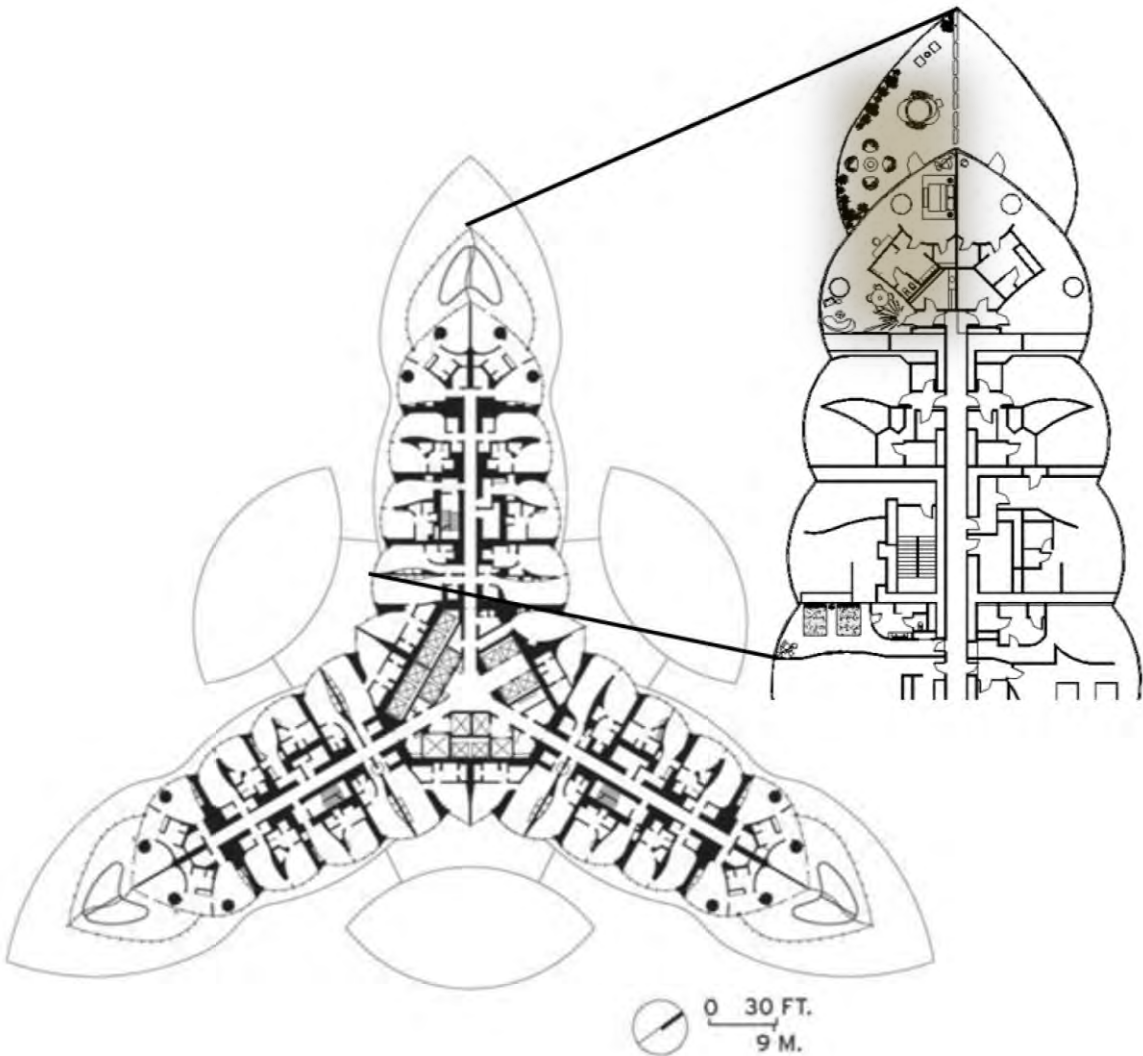
Eda Mame Sofa



Custom Henna Branding and Packaging



Pedicure Station Elevation



Hotel Room Floorplan



Guest Suite Bedroom



Painting by Local Dubai Artist
Akbar Saheb



Shaw Contract
Botan



Wolf Gordon
Japhet
Wallcovering



David Trubridge Light



Guest Suite Living Room



Guest Suite Balcony Featuring Plunge Pool



Standard Two Bed Guest Room



Inspiration for the Armani Hotel

