

ROSWELL PEDIATRIC ONCOLOGY & HEMOTOLOGY

STABILITY

To achieve a constant presence of stability within us and around us, by relying on comfort and compassion. To achieve comfort in one's life, by providing a stable environment in order to feel safe. To feel a sense of belonging, a place you can trust to care for you and support you. Stability helps individuals to not lose belief in their lives' meaning. Dynamic interplay between the search for meaning and the presence of meaning, as well as satisfaction with life, could become quite complex over time. With taking this into consideration, my design will provide a place for both the patients and their families to feel safe and peaceful.

Mission Statement

My mission is to build a space within the pediatric oncology center which satisfies not only the needs of the children who are treated there, but their support system as well. This will include immediate and extended family and friends, along with the medical staff providing their care. I will provide an environment which makes the patient feel safe, appreciated and strong. I will rely on Stability to comfort all who are involved in each patient's road to recovery.

Design Goals

- To provide a space which centers around the well being of the children receiving treatment.
- To have a distinct design for way finding throughout the Oncology center.
- To design communal space(s) for patients and guests, with a family home type feel.
- To accommodate the staff with spaces that compliment their working lifestyles in getting the job of caring for the patients, both effectively and efficiently

Data Analysis

Emotional Responses of User Groups; where the type of care and setting in which it is administered on the patients can have a huge influence on the patient.

Designing for all Ages

Assess patient care according to age, size, and condition.

Healing Environments

Play a positive role in the patients well-being and recovery.

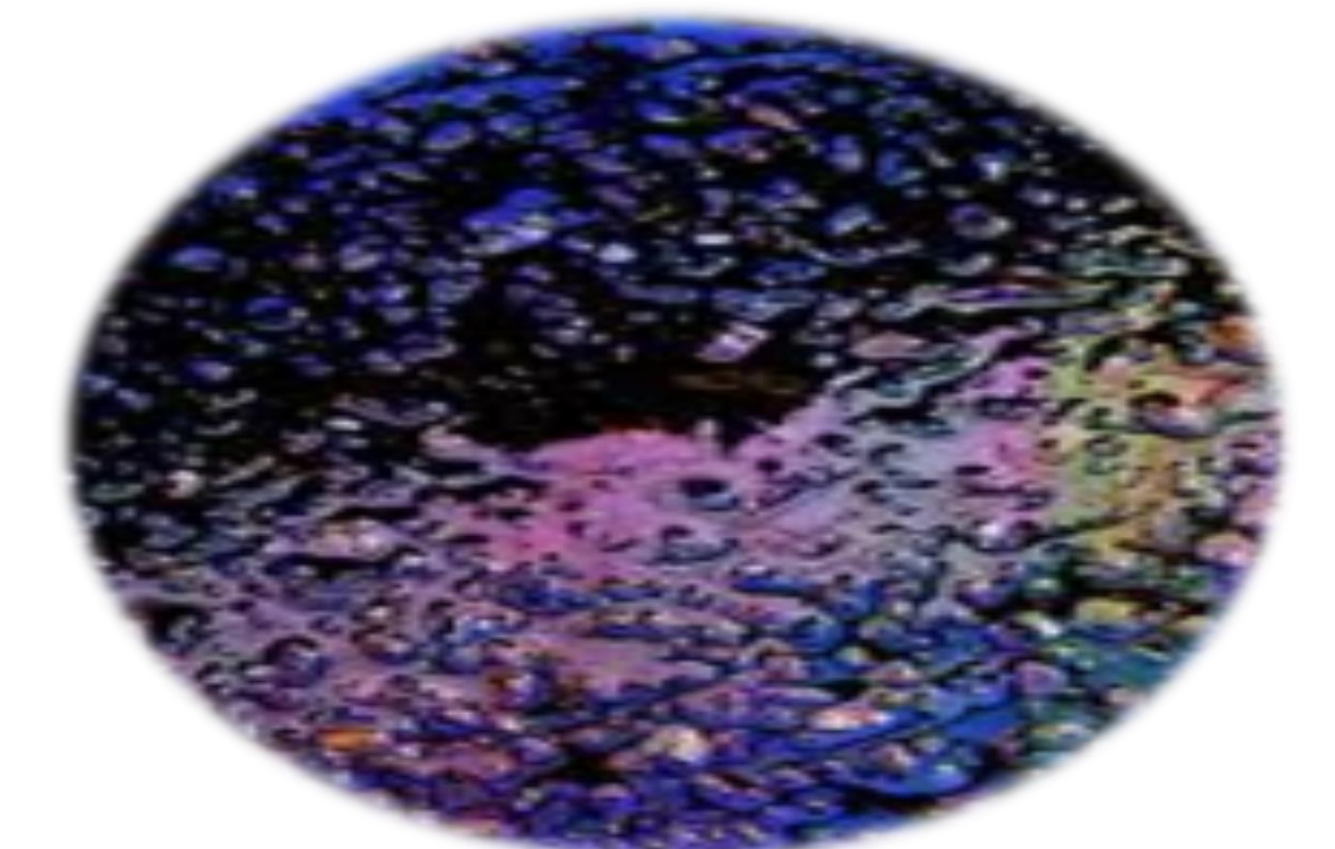
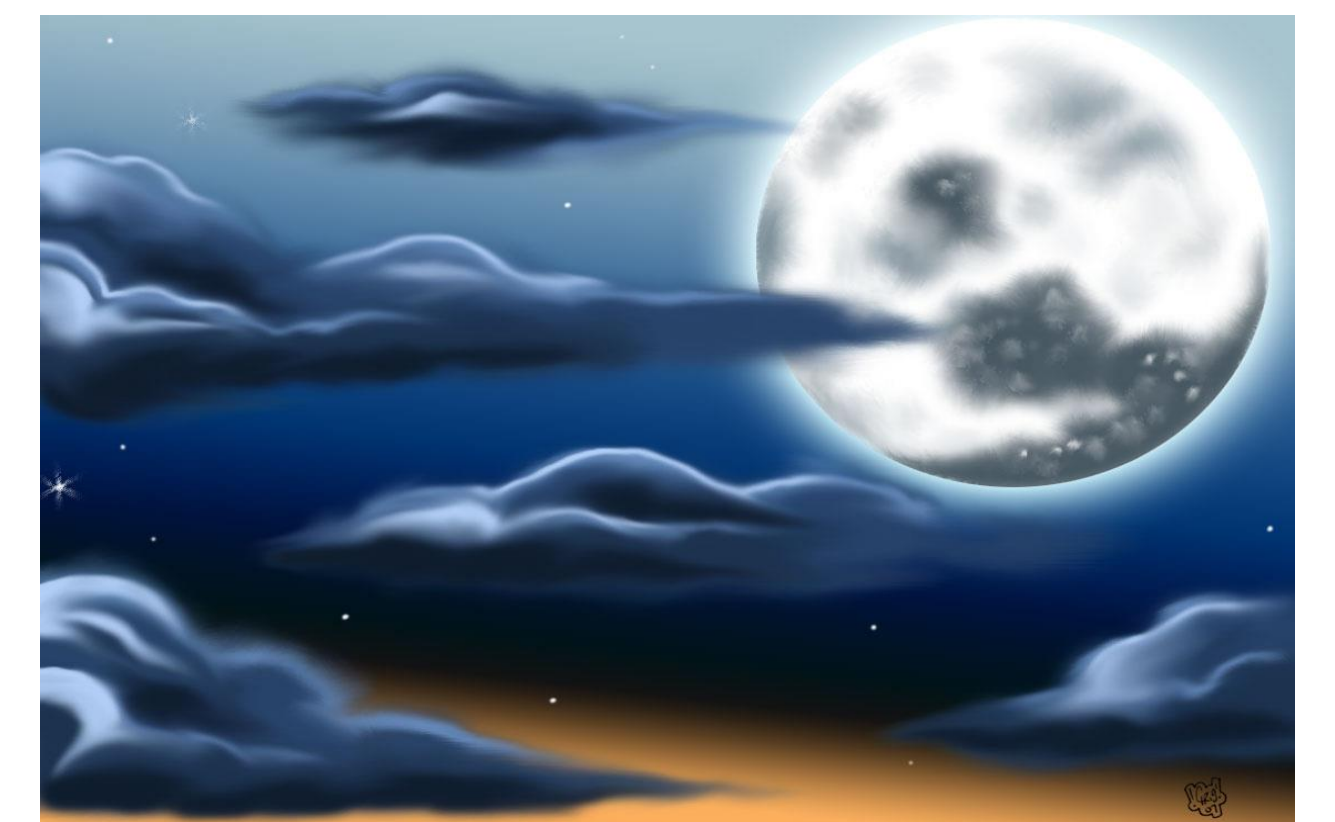
Patient vs. Outpatient

Comparing the necessities for both spaces.

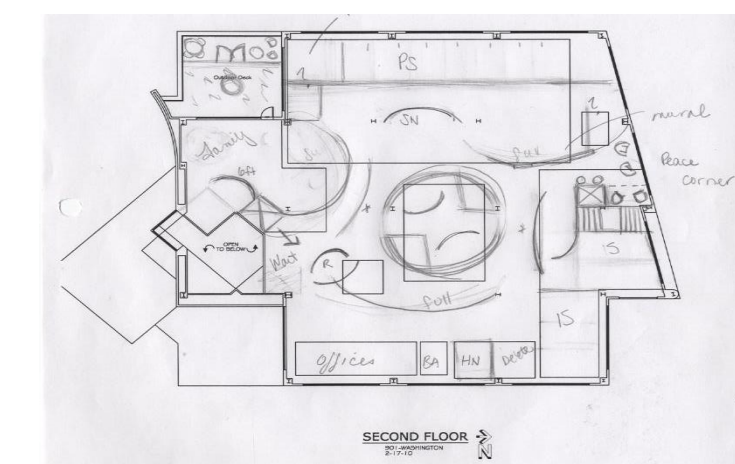
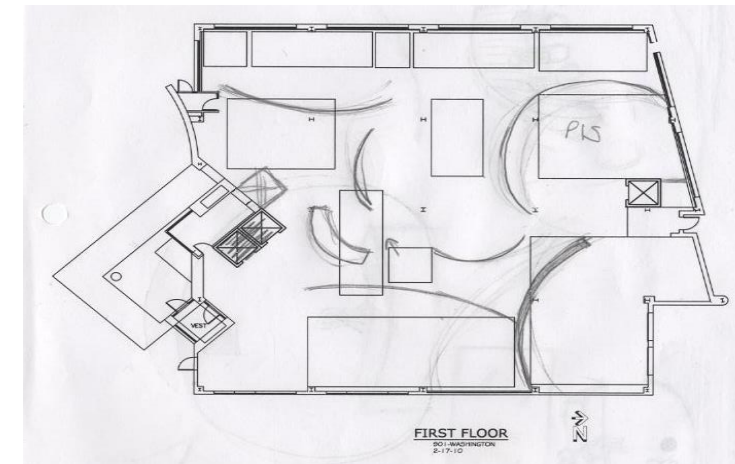
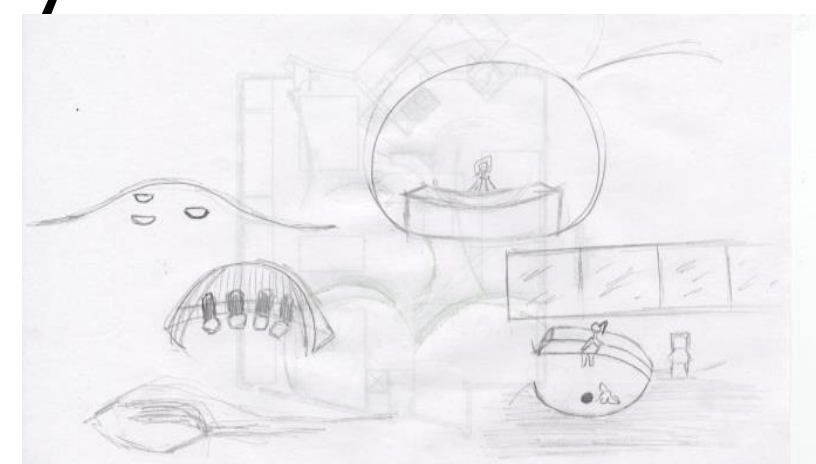
New Technologies in Health Care

Keeping up to date on new and helpful technology in a patients recovery.

INSPIRATIONAL IMAGES

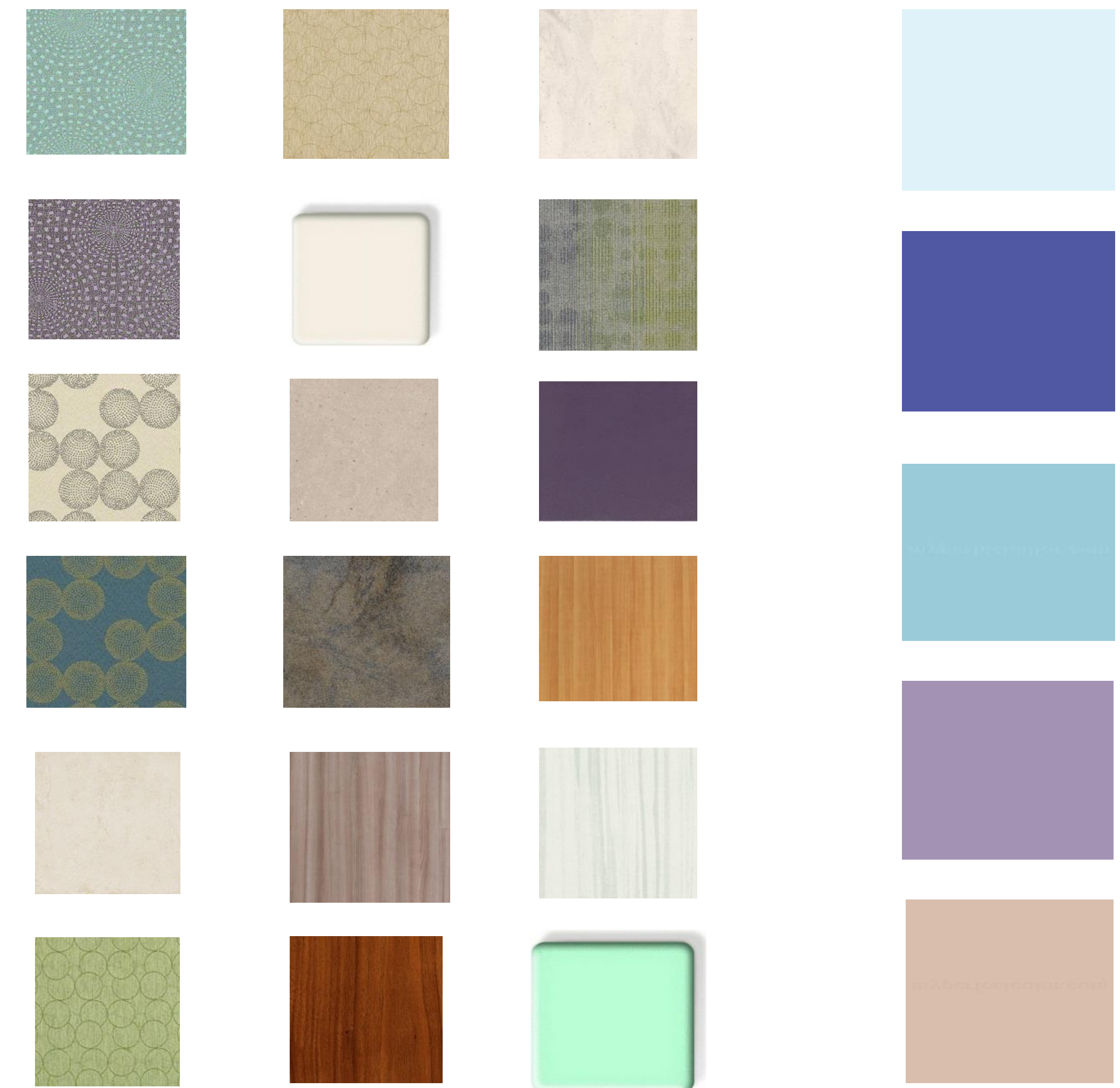


PROGRESS WORK



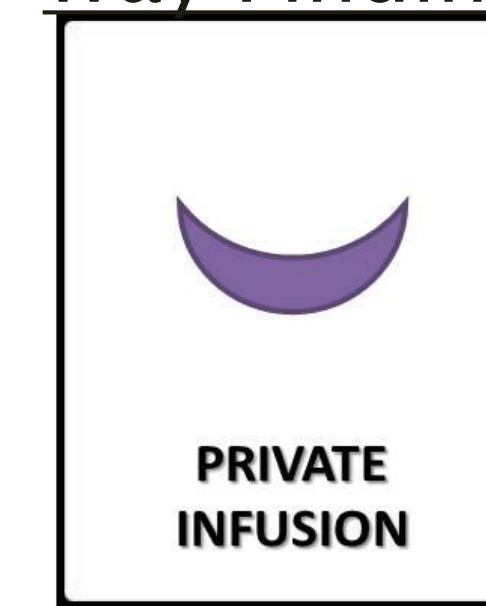
Laminates, Vinyl's, Fabrics, Corian, Carpet

Paint

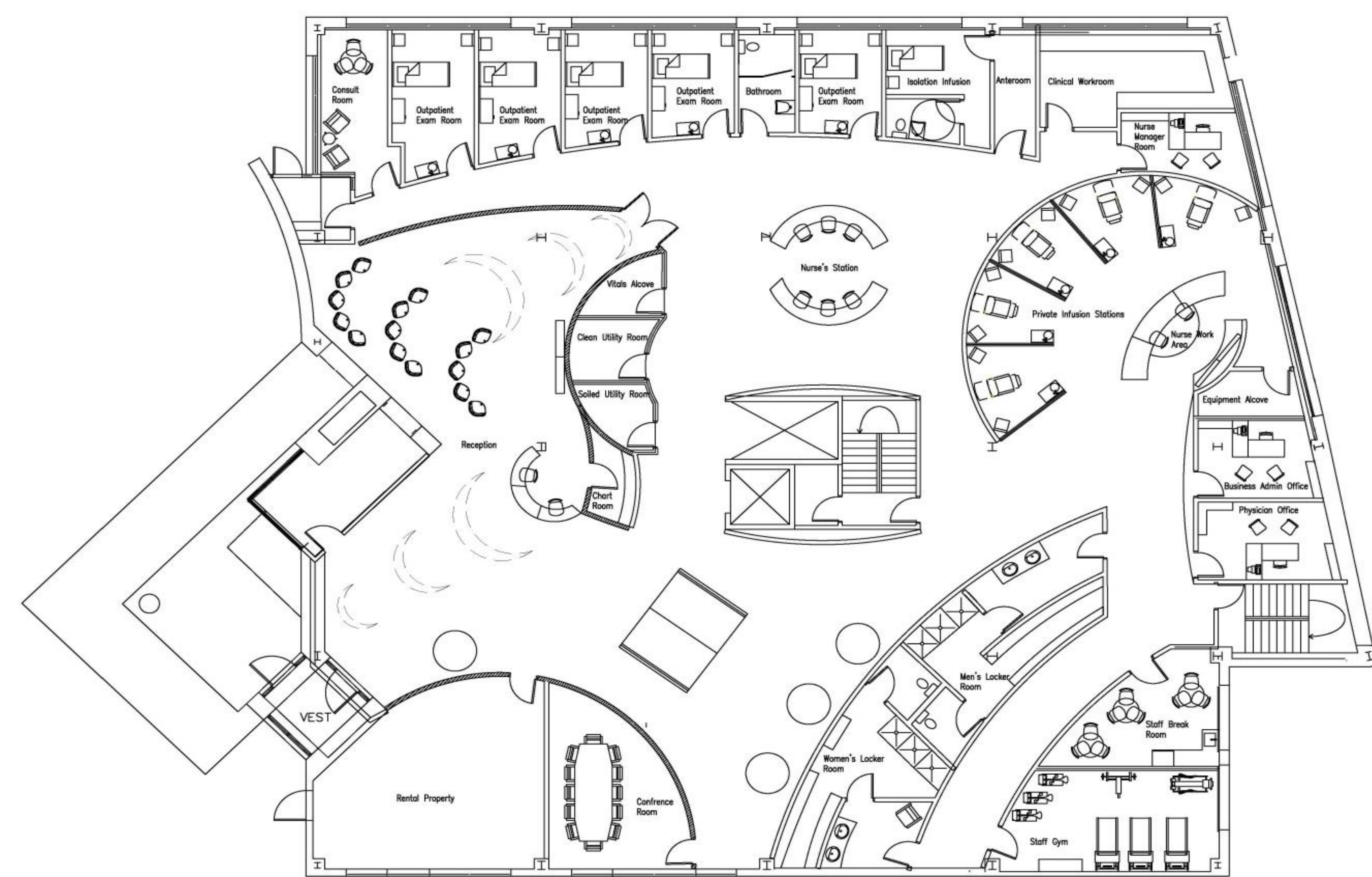


The moon is used as a symbol for the concept of stability in showing that just as life changes, so does the phases of the moon, yet it is relied on to protect and nurture us. The moon is something we can expect to see everyday, even though it's appearance changes, you can rely on it to always be there.

Way Finding



Colored half moons to coincide with tiles on first and second floors.



FIRST FLOOR
901-WASHINGTON



First Floor Perspectives



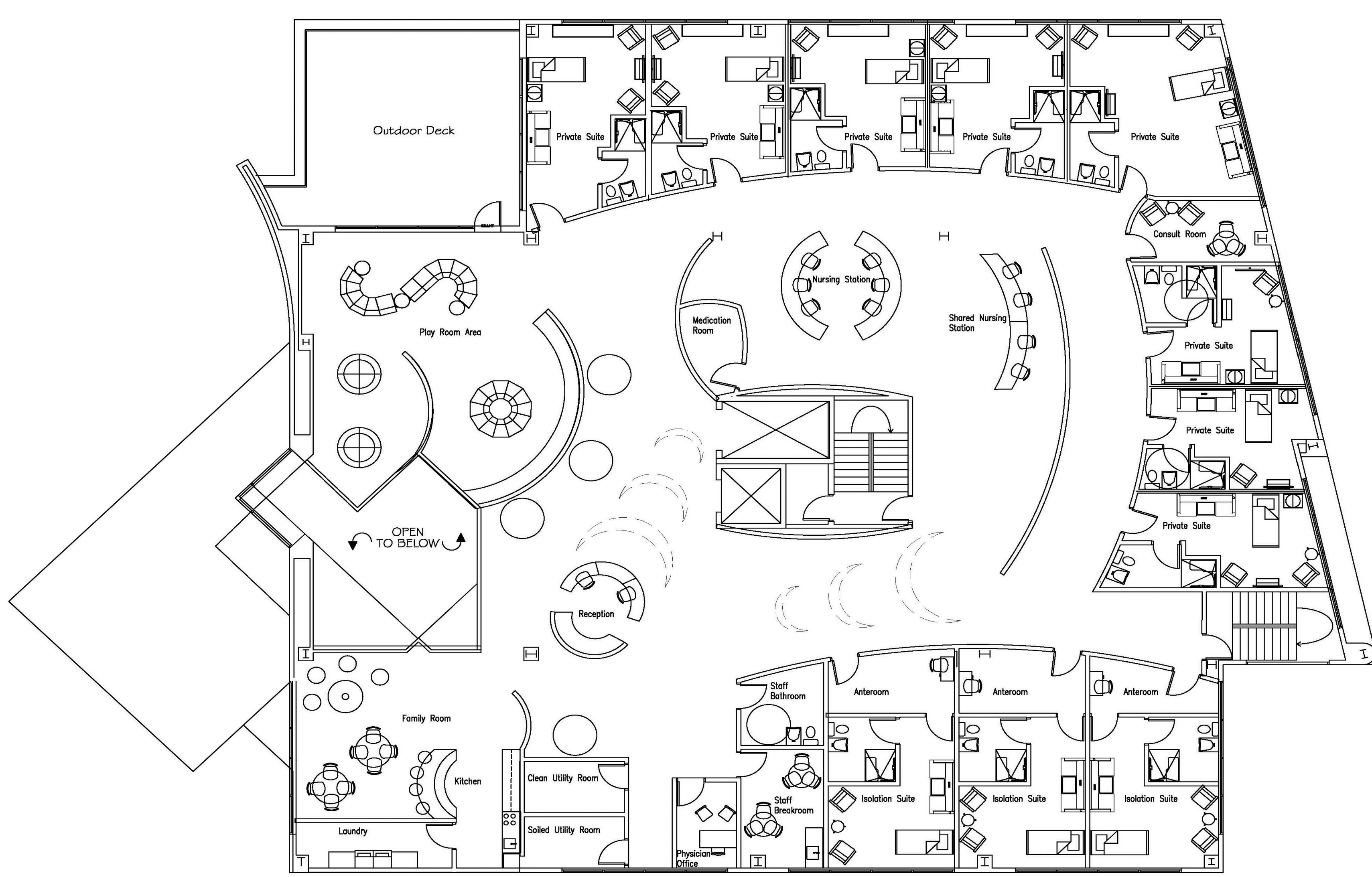
Reception Seating Area with tiered ceiling. Moon shaped tile in floor to provide way finding for people throughout the Oncology unit.



View of entrance to Oncology unit. Motion detection "moon tunnel" which activates light display as individuals walk through. Children's art is displayed throughout the space.



View of Private Infusion Suites. Infusion areas are separated between each other while remaining open in front for children to be able to see nurses for comfort. Programmable LED lighting to provide light therapy and calm the patients.



SECOND FLOOR
901-WASHINGTON

RECEPTION AREAS



INFUSION



OUTPATIENT



NURSE STATIONS



PRIVATE SUITES

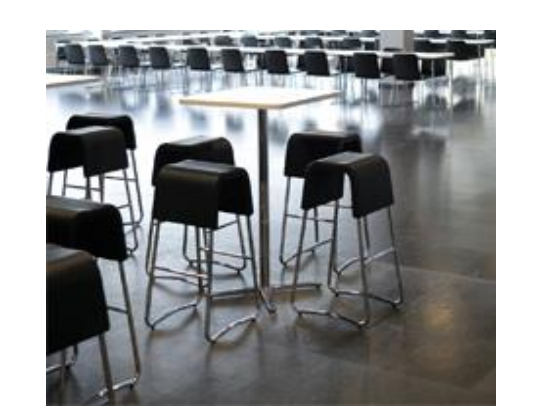


OFF THE WALL
FURNITURE
MADE IN
JAMESTOWN,
NY, BY JOHN
BRANDON.



MY
COMPANION
SIDE TABLE
ON
CASTERS,
MADE IN
JAMESTOWN
NY. BY JOHN
BRANDON.

FAMILY ROOM AREAS



Family Room area with an open floor plan. Acoustic ceiling to help minimize noise levels. Electric fireplace surrounded by seating for patients, family and friends to enjoy while spending time together.



Family/Play area with a half wall to provide separation for different age groups. Half moon extruded flooring for children to play. Curved seating provided for reading and relaxing.



Private Suite with SKY V ceiling treatment which gives views of different sky views throughout the day and can be controlled by the patient. Off The Wall furniture and My Companion furniture on casters to help keep suites easier to clean from dust, debris and bacteria.